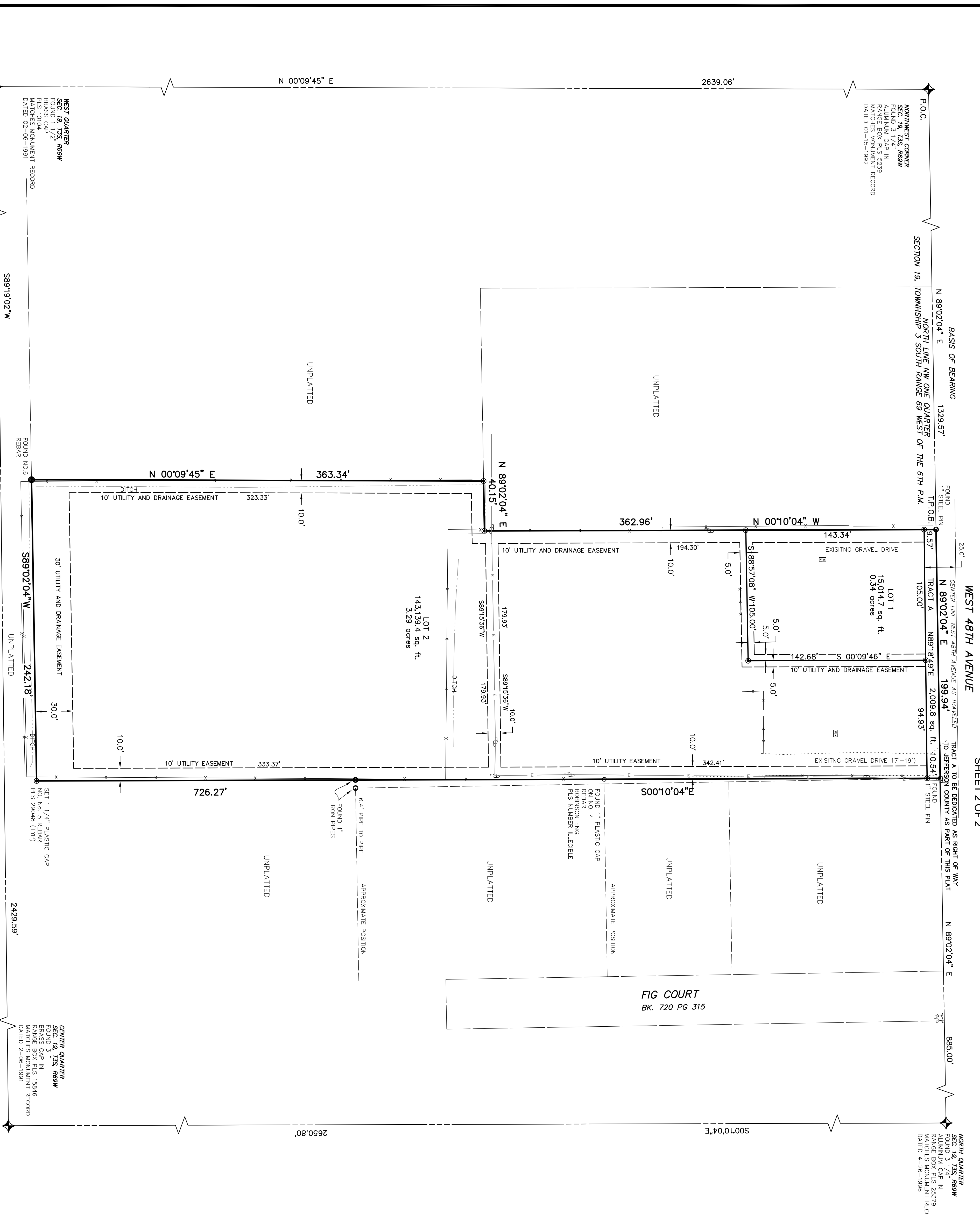


LORRAINE TRACEY SUBDIVISION

BEING A PORTION OF THE NORTHWEST QUARTER OF SECTION 19, TOWNSHIP 3 SOUTH, RANGE 69 WEST OF THE 6TH P.M.
 COUNTY OF JEFFERSON, STATE OF COLORADO
 SHEET 2 OF 2

CASE NUMBER: 12-125238PF

MAP NUMBER: 50



LEGEND	
●	INDICATES A FOUND NUMBER 6 REBAR
○	INDICATES A FOUND 1" PLASTIC CAP ON A NUMBER 4 REBAR ROBINSON ENGINEERING ILLIBLE
⊙	INDICATES A SET 1 1/4" PLASTIC CAP ON A NUMBER 5 REBAR PLS 29048
○	INDICATES A FOUND 1" IRON PIPE
◆	INDICATES ALIQUOT CORNER MONUMENT
⊕	INDICATES A FIRE HYDRANT
*****	INDICATES FENCE LINES
---	INDICATES OVERHEAD ELECTRIC LINES

